



ÆRATIS

(ě r ' - u h - t i s)

PVC PORCH FLOORING

ÆRATIS

(ě r ' - u h - t i s)

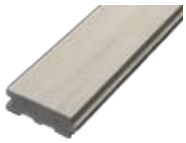
PVC PORCH FLOORING



Aeratis Porch Flooring is made with PVC, organic, and inorganic materials. Aeratis uses the latest emerging PVC technology to provide a beautiful product with performance far superior to wood or other composite materials. Coupled with a great appreciation for historic, traditional design, Aeratis strives to make products for the building industry that stand up to the scrutiny of the most discerning traditional architects, builders, and consumers. Aeratis PVC porch flooring carries a Class "A" fire rating and can be used on covered and uncovered porch applications.

Aeratis porch flooring and trim is designed to look like the traditional wood products it meant to replace. **Aeratis** products have the workability of wood and are installed using the same methods and techniques as traditional materials. Each product is designed to help achieve the look of the traditional front porch and the feel of our American building heritage. **Aeratis** is focused on texture, grain, workability, reducing expansion and contraction, as well as paintability. **Aeratis** products may be painted, but is not required.

7/8" x 3-1/8"
Porch Flooring



Aeratis Porch Flooring

Aeratis Porch Flooring has a traditional 7/8" x 3-1/8" tongue-and-groove profile, and it is available in 10', 12', and 16' lengths. **Aeratis** also offers traditional trim profiles to finish the edge of the porch including quarter-round, half-round nosing, ogee nosing, and Chamfer nosing in 8' lengths.

Cedar

Redwood

Weathered



1" x 7/8"
Chamfer nosing



1" x 1/2"
Half-round nosing



9/16" x 9/16"
Quarter-round



1-3/4" x 1-3/8"
Ogee nosing

Performance Characteristic

Flame Spread
ADA Slip Test
Coefficient of Expansion
Compression Parallel
Shear
Screw Withdrawal
Decay Resistance
Termite Resistance
Weatherability – 2000 hours
50 Cycle Freeze Thaw
Water Absorption
Modulus of Rupture
Modulus of Elasticity

ASTM Method

ASTM E84
ASTM F1679
ASTM D696
ASTM D198
ASTM 143
ASTM D1761
ASTM D1413
ASTM D3345
ASTM D2565
AC 174
ASTM 570
ASTM D6109
ASTM D6109

Results

25 – Class 1 or A
.82 dry/.72 wet
1.91 x 10⁻⁵ in/in/°F
2605 psi
2939 psi
806 lbs
No Decay
10 – Highest Rating
91% of Baseline MOR
93% of Baseline MOR
1.21%
16" O.C. – 3149
16" O.C. – 372,000